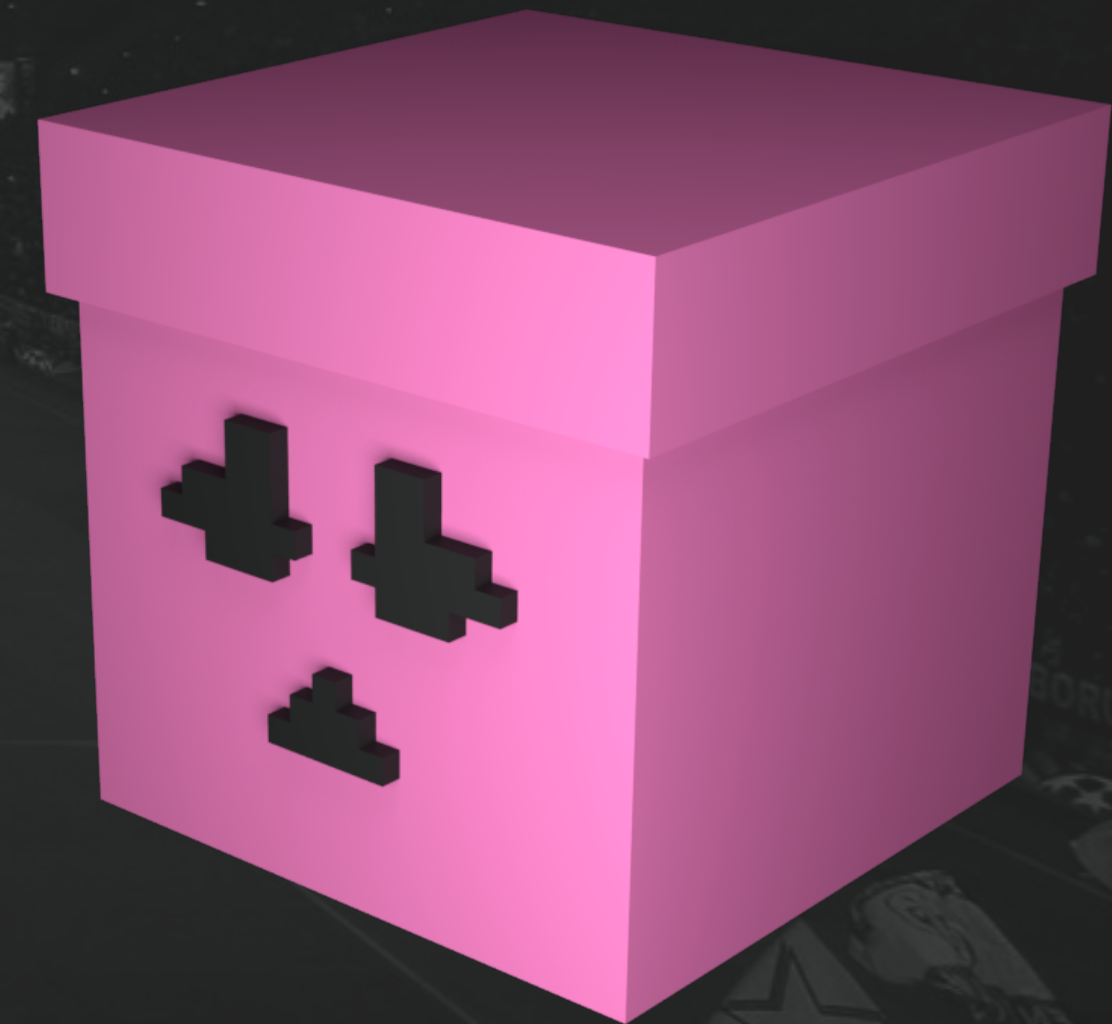


HOW TO CREATE YOUR OWN PIXEL MAN?

No matter where you are in the world, you can become Pixel Man very easily

MATERIALS:

- **Magenta corrugated cardboard** measuring 39.37 x 47.24 inches.
- **Very thin and transparent black fabric** measuring 9.84 x 9.84 inches (to cover the eyes and mouth from the inside).
- **2 sheets of 8x11 Black Paper** (to make eyes & mouth)
- **Glue** suitable for cardboard and fabric.
- **Scissors or a box cutter.**



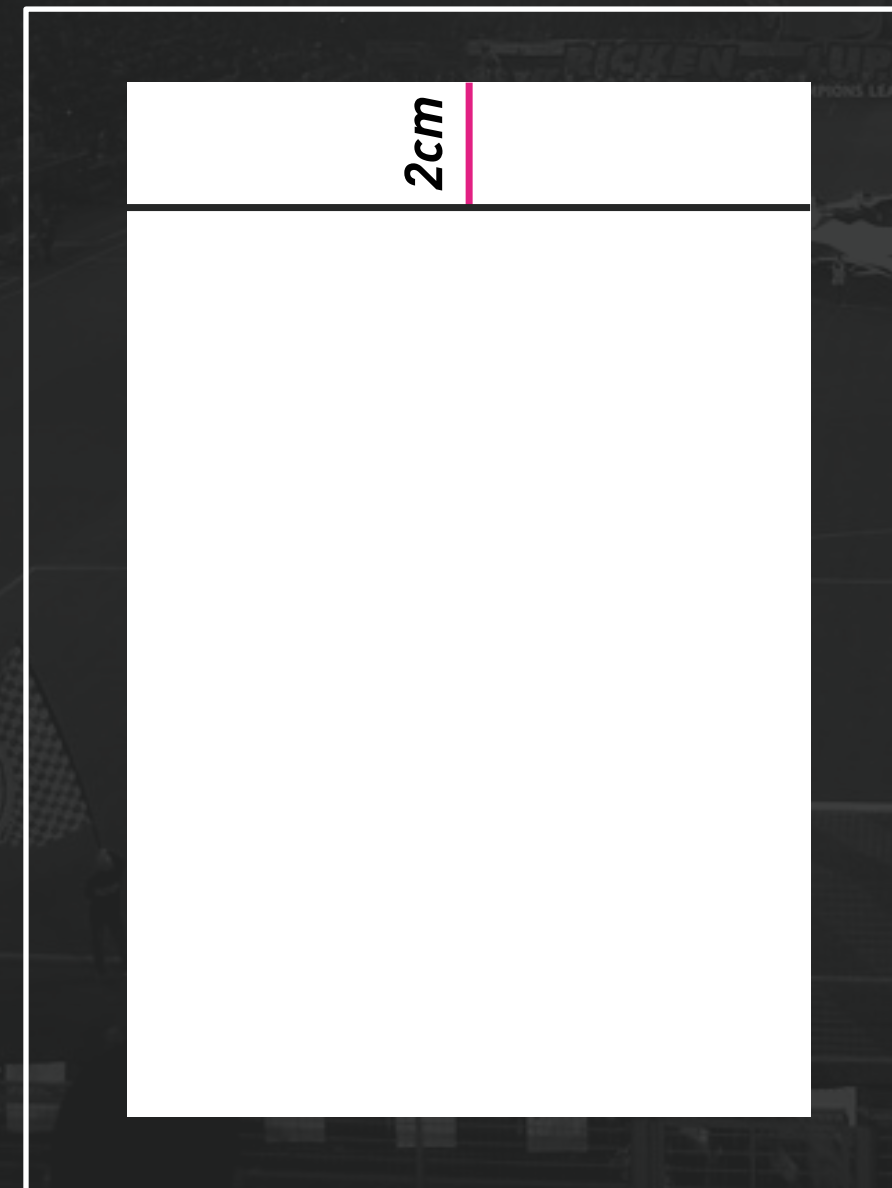
F20



PROCESS

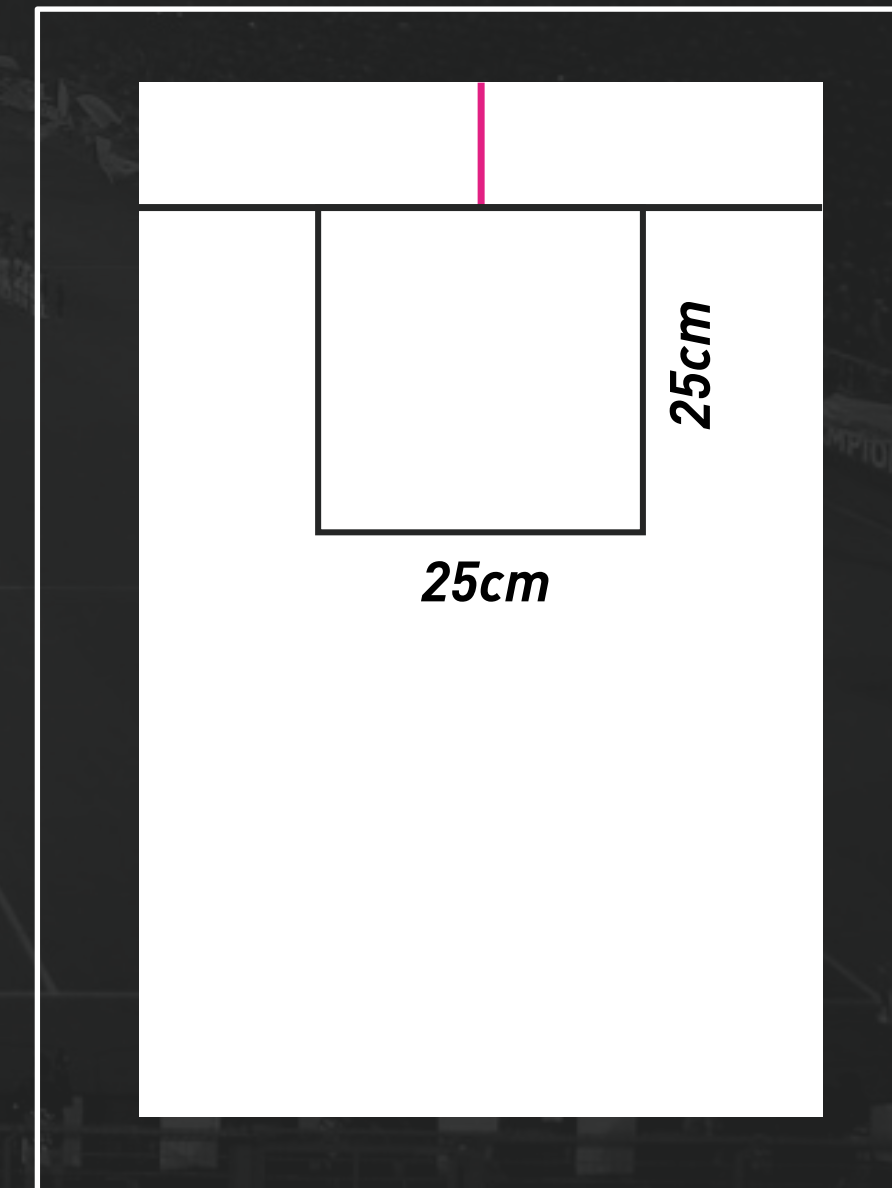
STEP 1:

Draw a pink line 0.79 inches long, dividing the cardboard into two parts (19.69 x 19.69 inches). Then draw a black line perpendicular to the pink line (across the width of the sheet), creating two rectangles of 19.69 x 0.79 inches.



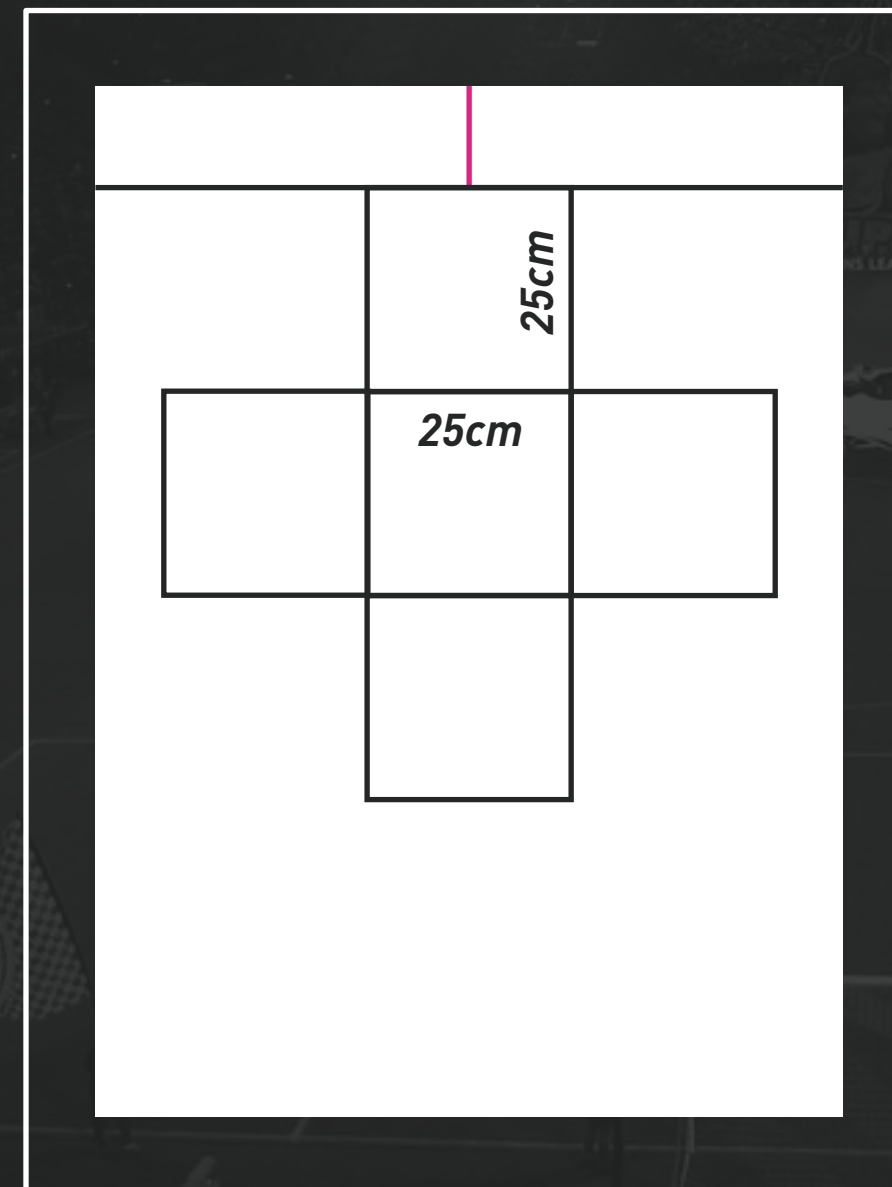
STEP 2:

Draw a 9.84 x 9.84 inch square with a black pencil, attached to the black line from step 1. This will be one side of the cube.

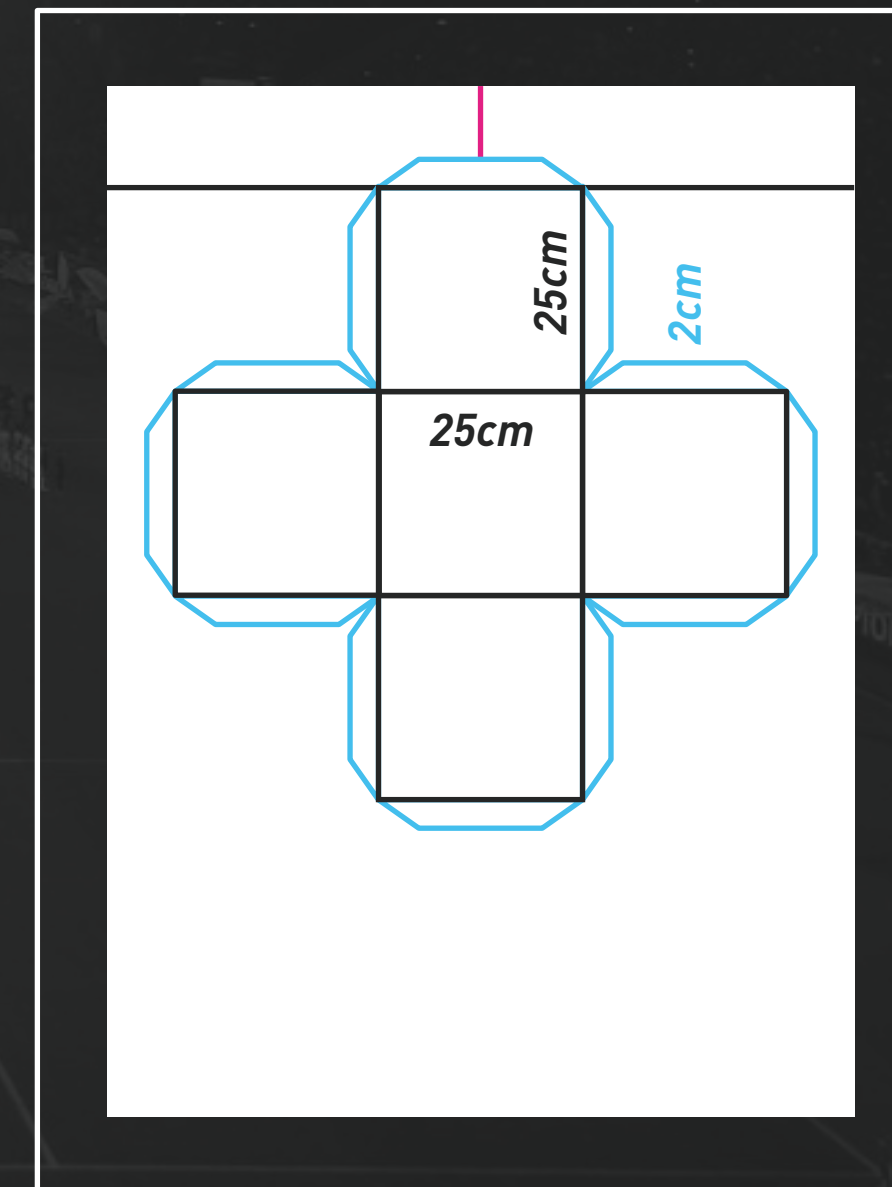


STEP 3:

Using the same black color, draw four more squares of the same dimensions (9.84 x 9.84 inches), forming a cross with the squares, as shown in the image.

**STEP 4:**

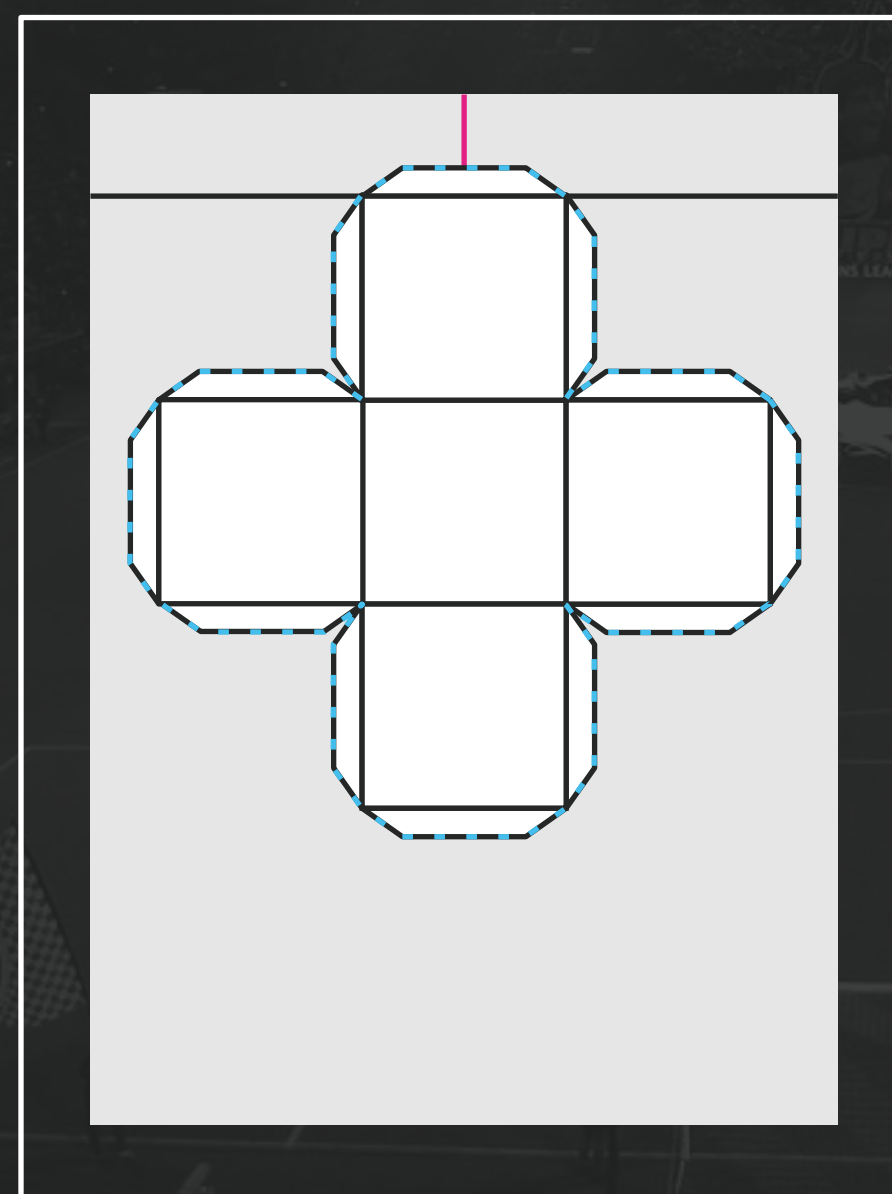
With blue color, draw 0.79-inch-long tabs on the visible sides of the five squares to facilitate assembly.



F20

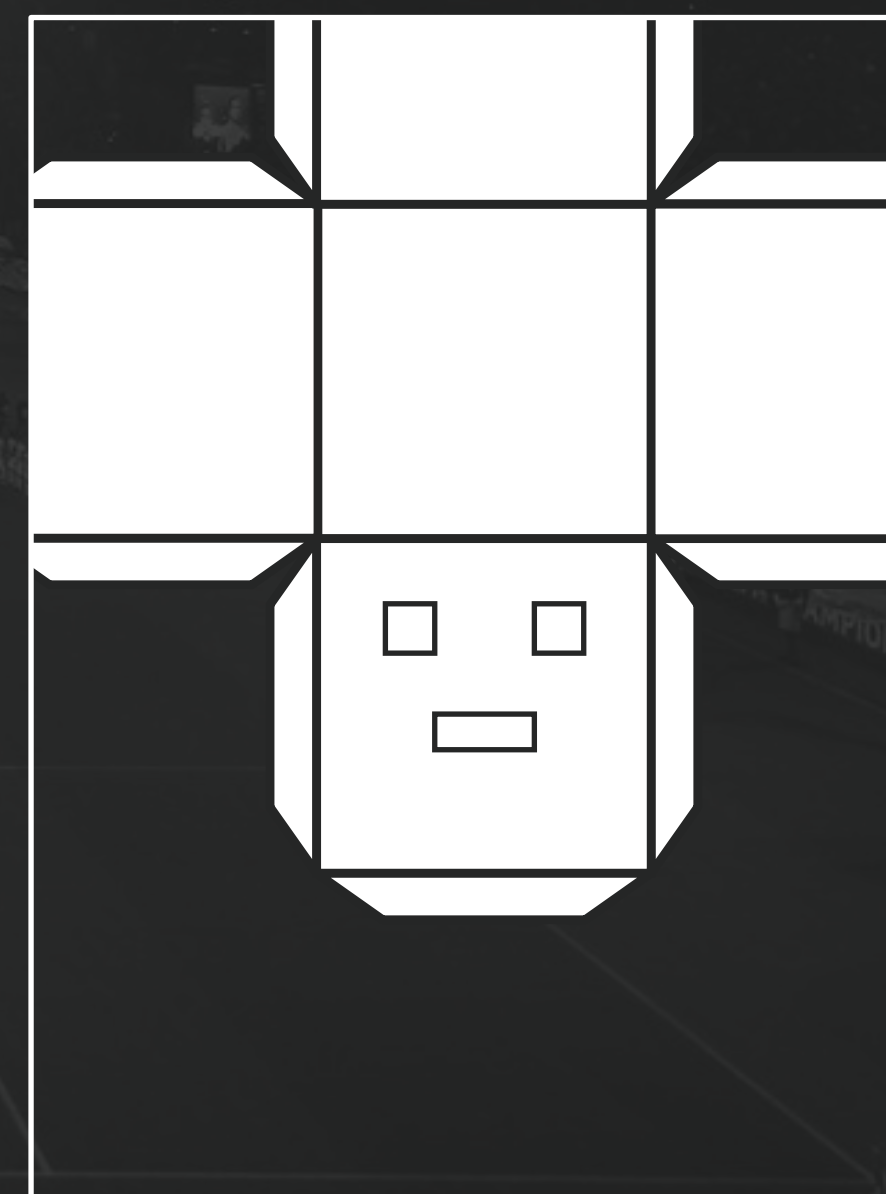
STEP 5:

Carefully cut along the blue lines using scissors or a box cutter. The result should be a single connected piece.



STEP 6:

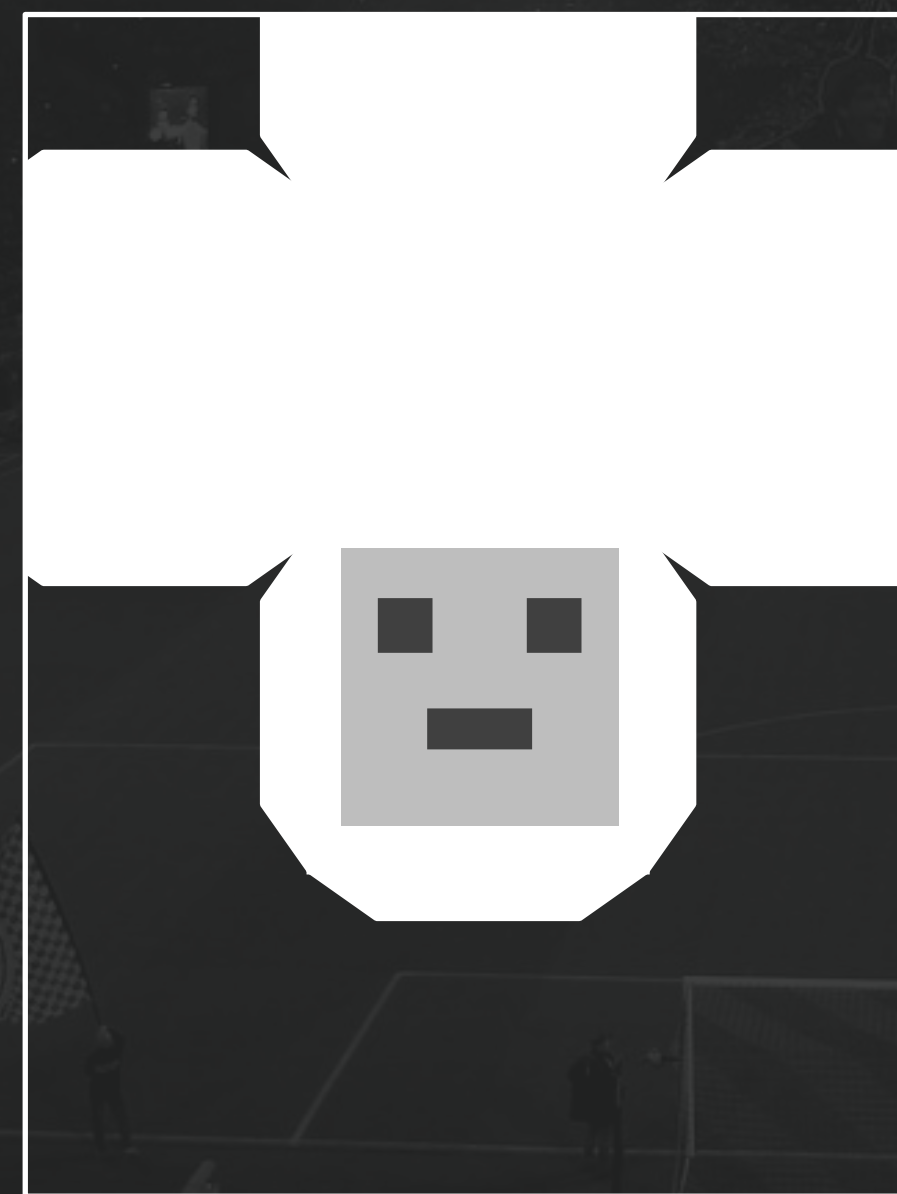
On one side of the cardboard, draw and cut two squares to represent the eyes and one square to represent the mouth (see image).



F20

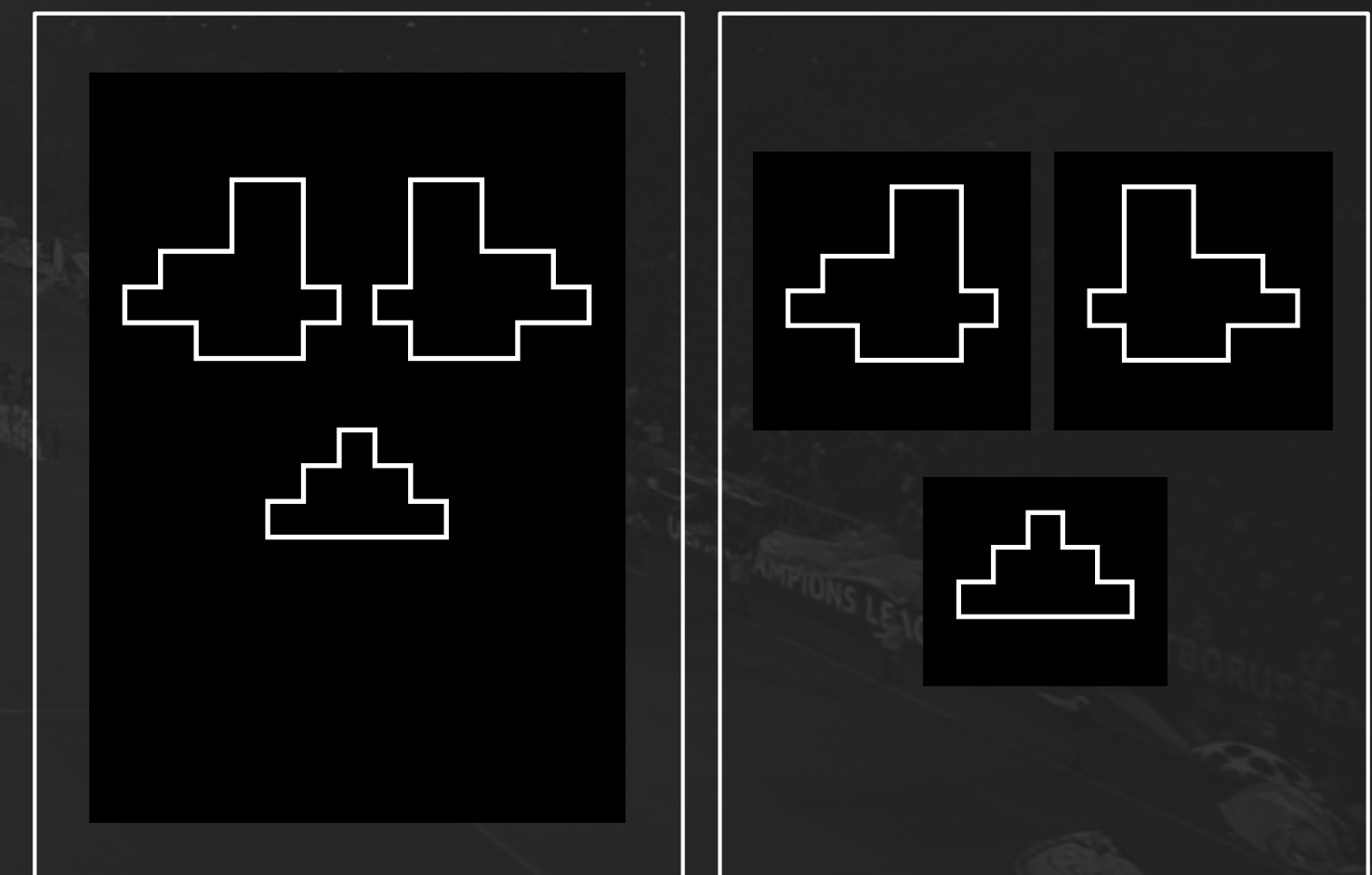
STEP 7:

Glue the black fabric right behind the eye and mouth openings. This will prevent the inside from being visible while allowing the person wearing the mask to see out.



STEP 8:

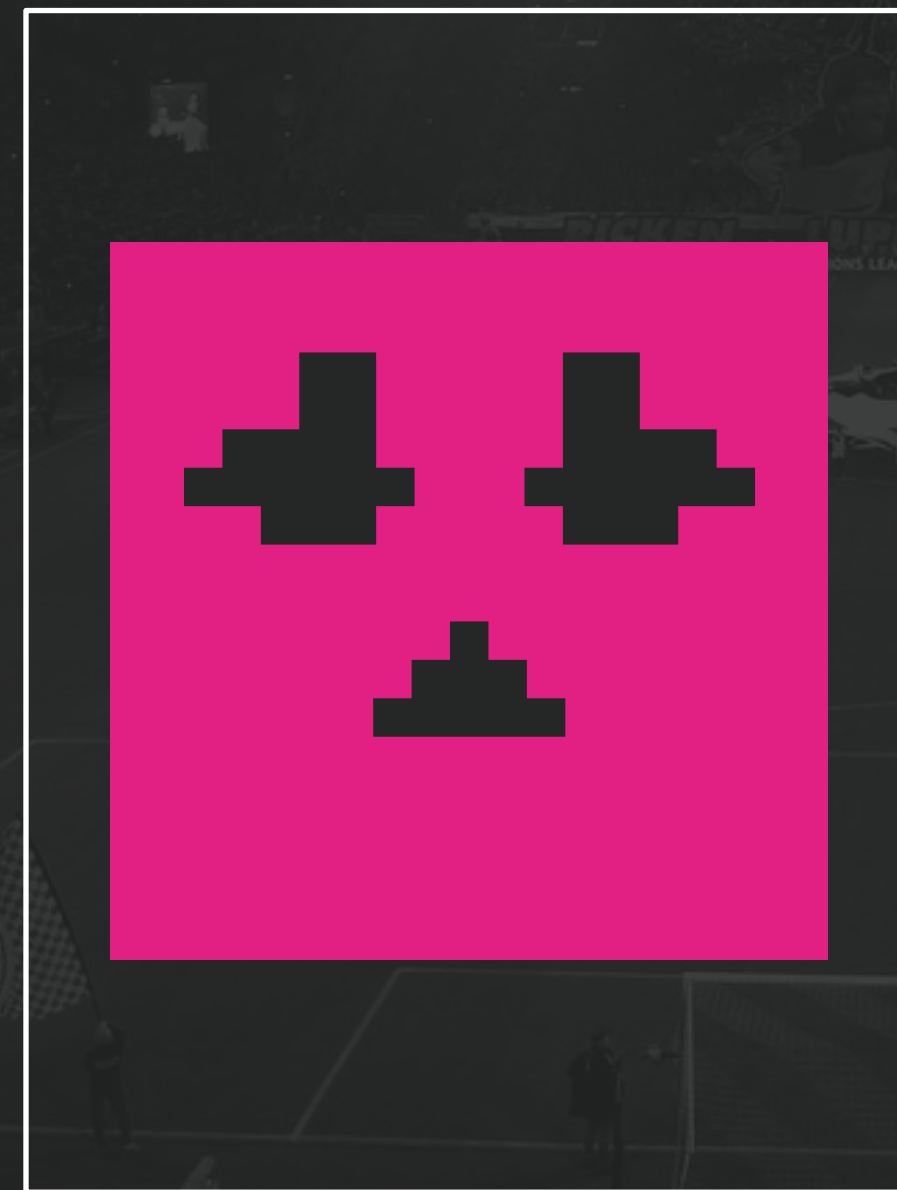
On the black paper, draw the eyes and mouth as if they were pixels (see image). Leave a square in the middle to align with the cardboard holes.



F20

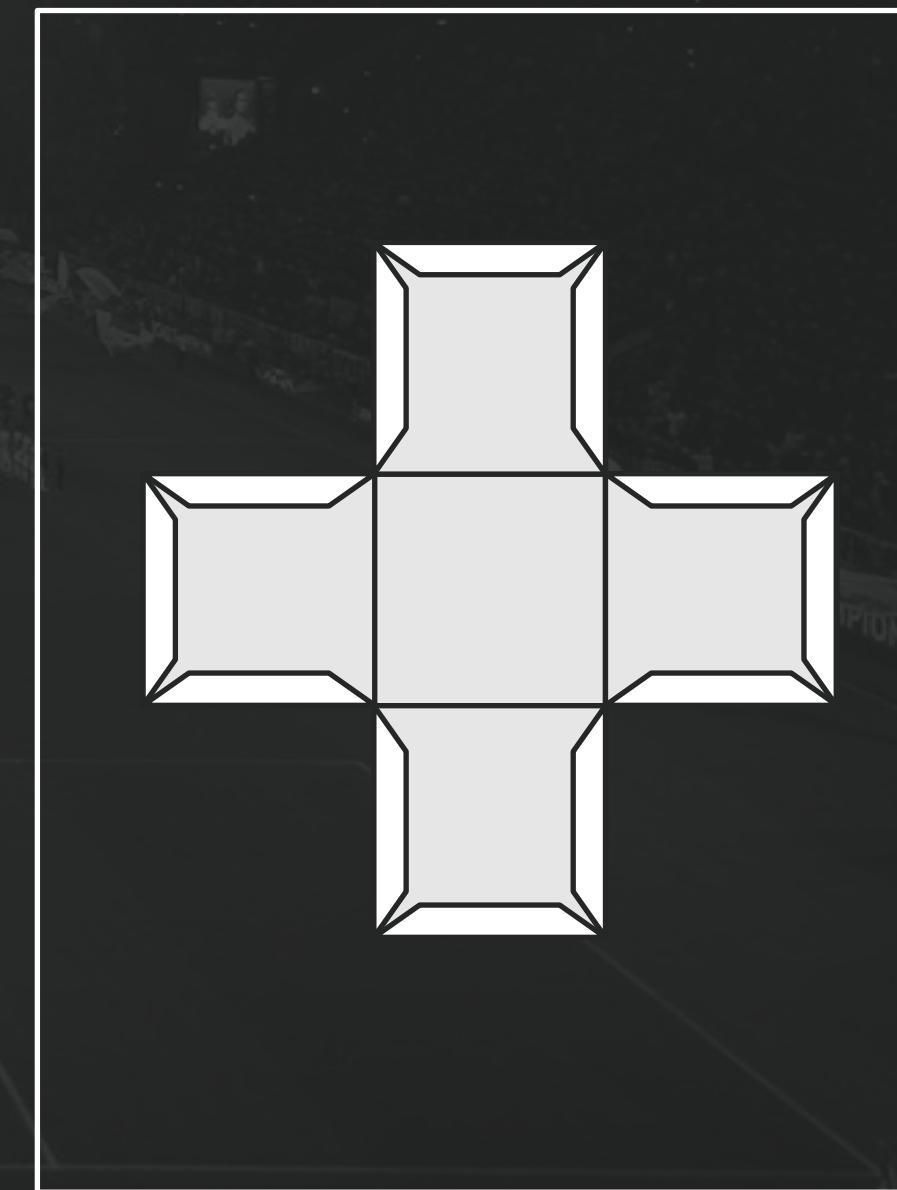
STEP 9:

Cut out the eyes and mouth. Align and glue them with the holes you created in the cardboard. Make sure they are properly aligned.



STEP 10:

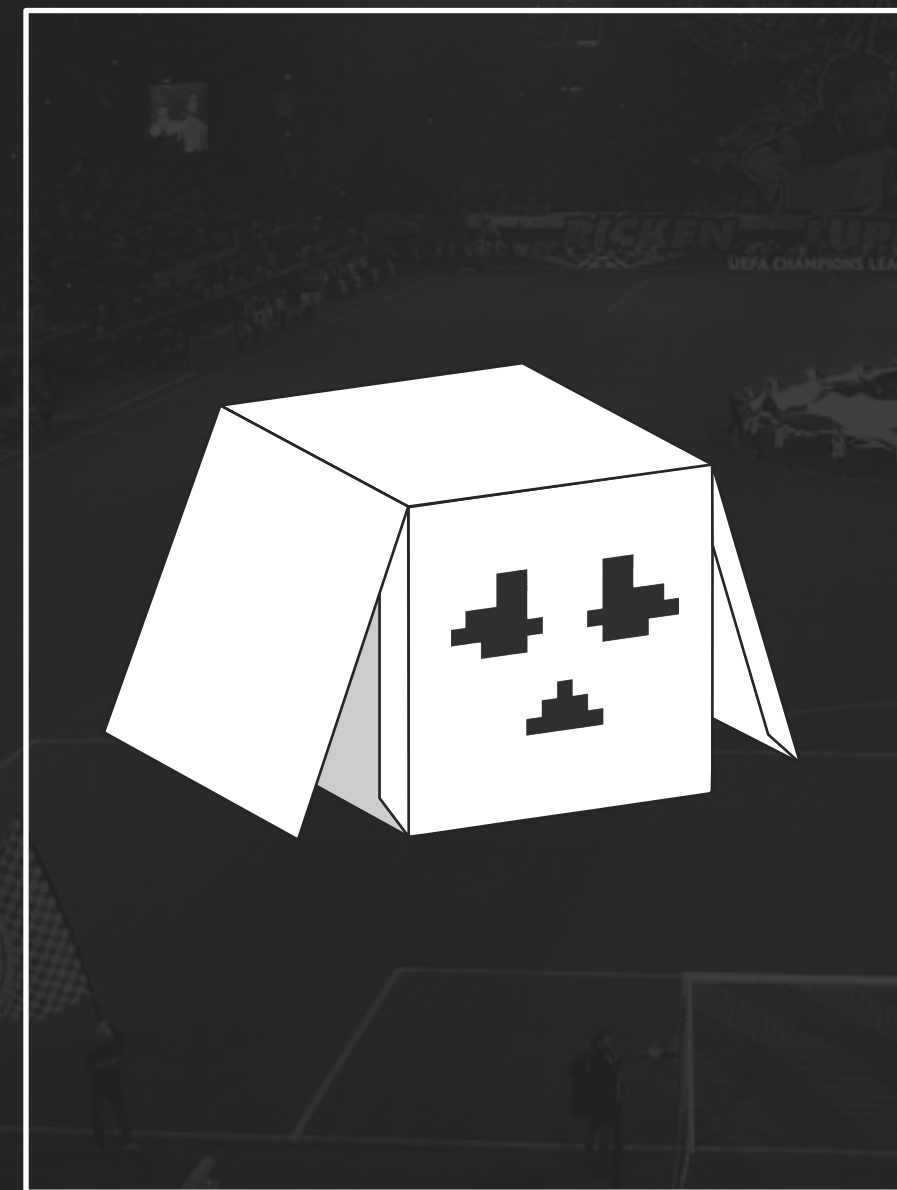
Fold all the lines of the cardboard to form a cube without damaging it.



F20

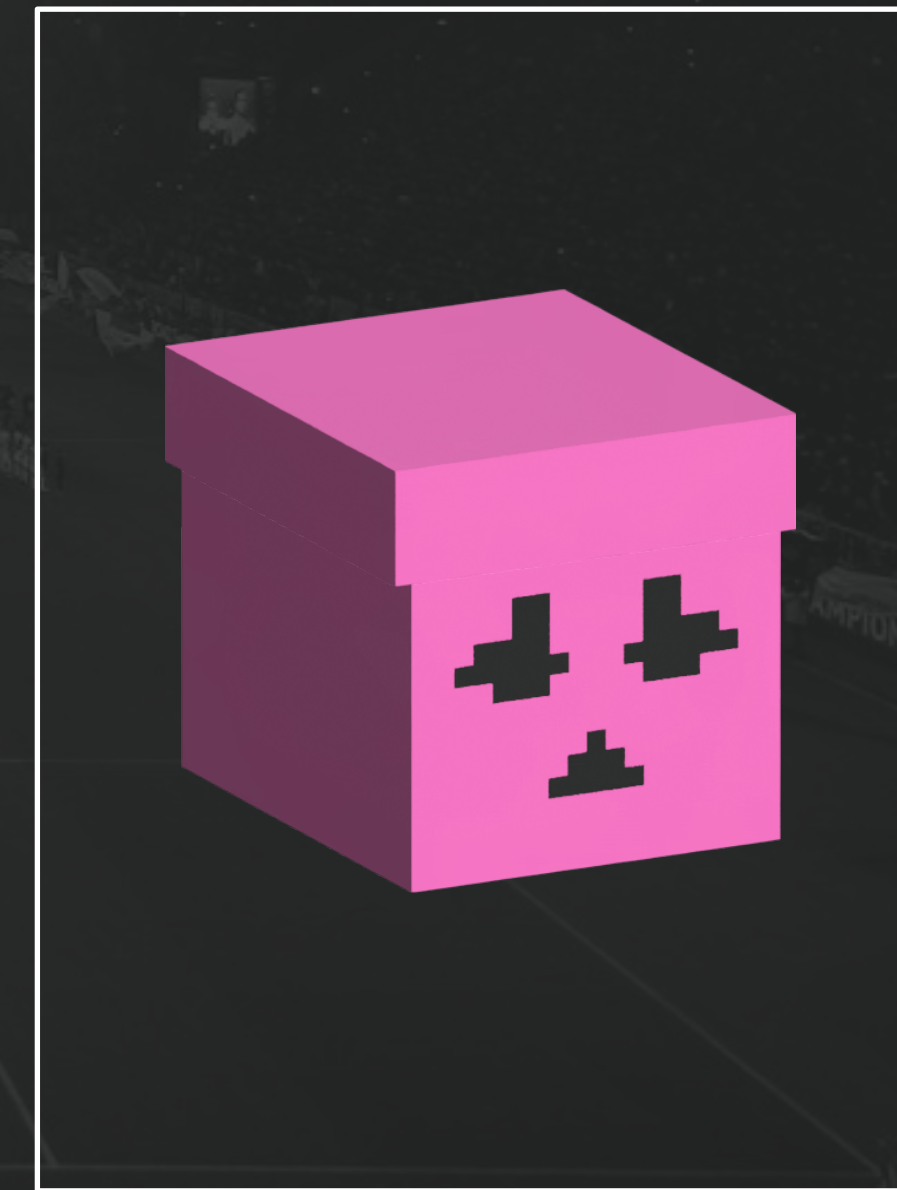
STEP 11:

Assemble the cube by gluing the tabs to join all the sides.



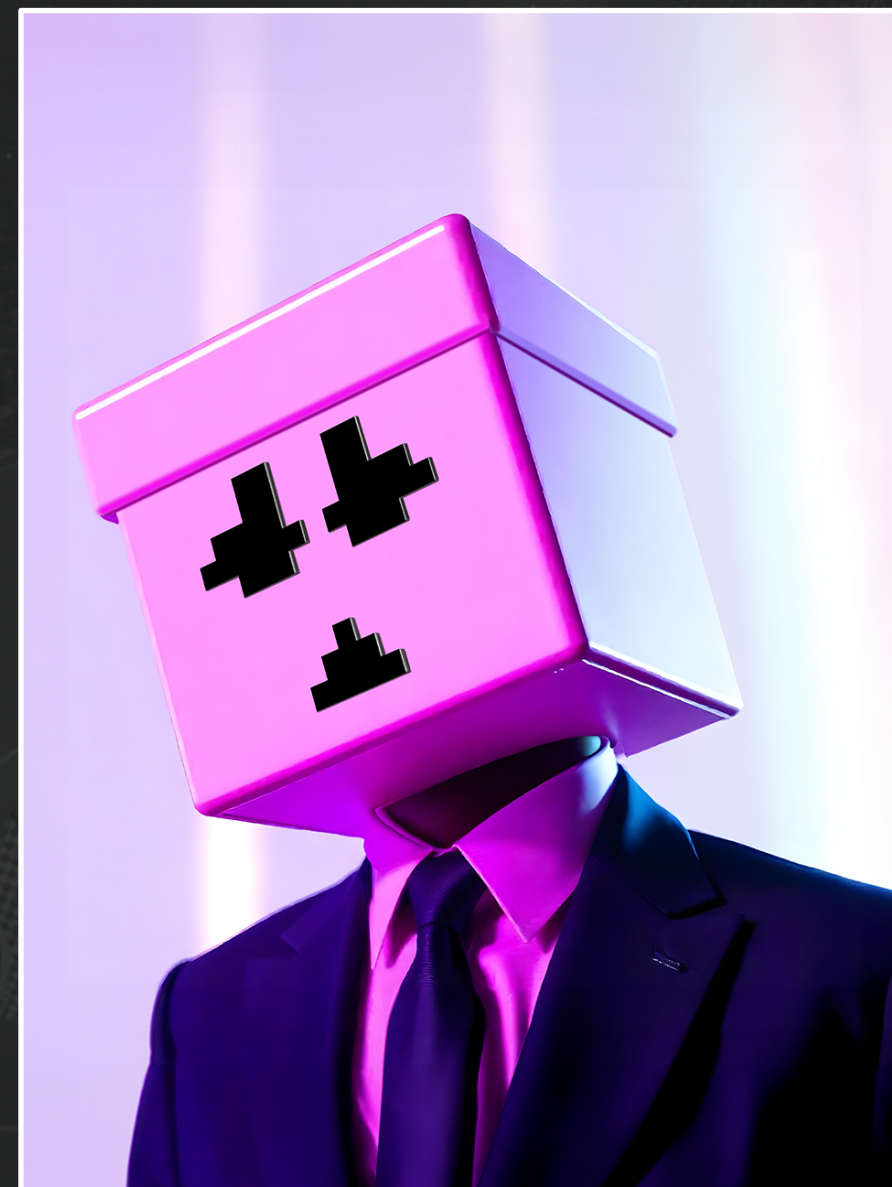
STEP 12:

Optional: Buy a magenta cardboard box that fits your head and repeat steps 6, 7, 8, and 9. Additionally, you can use the box lid as a hat if you'd like.



F20

STEP 13:
Your Pixel-Man is ready for action!



Show us the result by tagging us in
[@pixelmanok](https://www.instagram.com/pixelmanok)

See you!